

Gå på logg/file management, står det Backup to A: og du ikke har diskett stasjon må du endre dette, se neste bilde

The screenshot shows the Euronav seaPro software interface. The main window displays a map of the North Atlantic/Mediterranean Sea with a route plotted. The title bar reads "Euronav seaPro (Route: Brygga-Bærumplastservice, Log: Hovda)". The menu bar includes "Chart", "Waypoints", "Route", "Log", "Tides", "Setup", "RADAR", "Weather", "Sailing", "Window", and "Help". The "Log" menu is open, showing options like "Select...", "New...", "Save As...", "Reset", "View...", "View Format...", "Select Previous Track...", "Display Vessel Track On Charts", "Display Previous Track On Charts", "View graphs - Historic (Logged data) ...", "View graphs - Running (Instrument data) ...", "Animation...", "Add", "Print...", "Export...", "Import...", and "File Management". The "File Management" sub-menu is also open, showing "Backup to A:...", "Load from A:...", and "Delete File...". The map shows a route starting from Brevik and heading towards Fredrikstad. The distance to the next waypoint is 71 nm. The right panel shows navigation data: LAT, LNG, COG, SOG, ROT, Hd T, D, m. The Plan panel shows Wpt 1, Dist 0.14, BrT 232, CTS 230, and ETA 09 May 17:00. The Actual panel shows Wpt 1, Dist, BrT, XT, TTG, ETA, and ETR. The Target Marker panel shows Dist nm. The Windows taskbar at the bottom shows the Start button and several open applications: X-Klubb - Microsoft..., ny utgave - Windo..., innstillinger, 2 Microsoft Power..., and Euronav seaPro (R...).

Gå til setup/ system properties. Endre A: til C: Restart Seapro

**Euronav seaPro (Route: Brygga-Bærumplastservice, Log: Hovda)**

Chart Waypoints Route Log Tides Setup RADAR Weather Sailing Window Help

59 13.532N 10 5.845E UTC 17:19:37 (19:19)

View X-Line Route SatCom Enroute Panel

BA4004 | 1:20000000 | Metres | x101.3 | datum WGS84 | 71 nm | NORTH ATLANTIC:MEDITERRANEAN SEA

**System Properties**

Paths

Path to floppy drive or folder used for file backups:  
A:

Path to route files:  
Route

Time

Synchronise PC clock to NMEA UTC time

Sailing

Allow Sailing Features

Wind Angles

0 - 180  
 0 - 360

Speech

Allow Speech Features

System Tick (default 50) in ms

10  50  100  200

Alters the update rate to the display, lower values require higher performance computer

Cancel OK

**Navigator**

LAT  
LNG  
COG  
SOG  
ROT  
Hd T D m

**Plan**

Wpt 1  
Dist 0.14  
BrT 232 CTS 230  
ETA 09 May 17:00

**Actual**

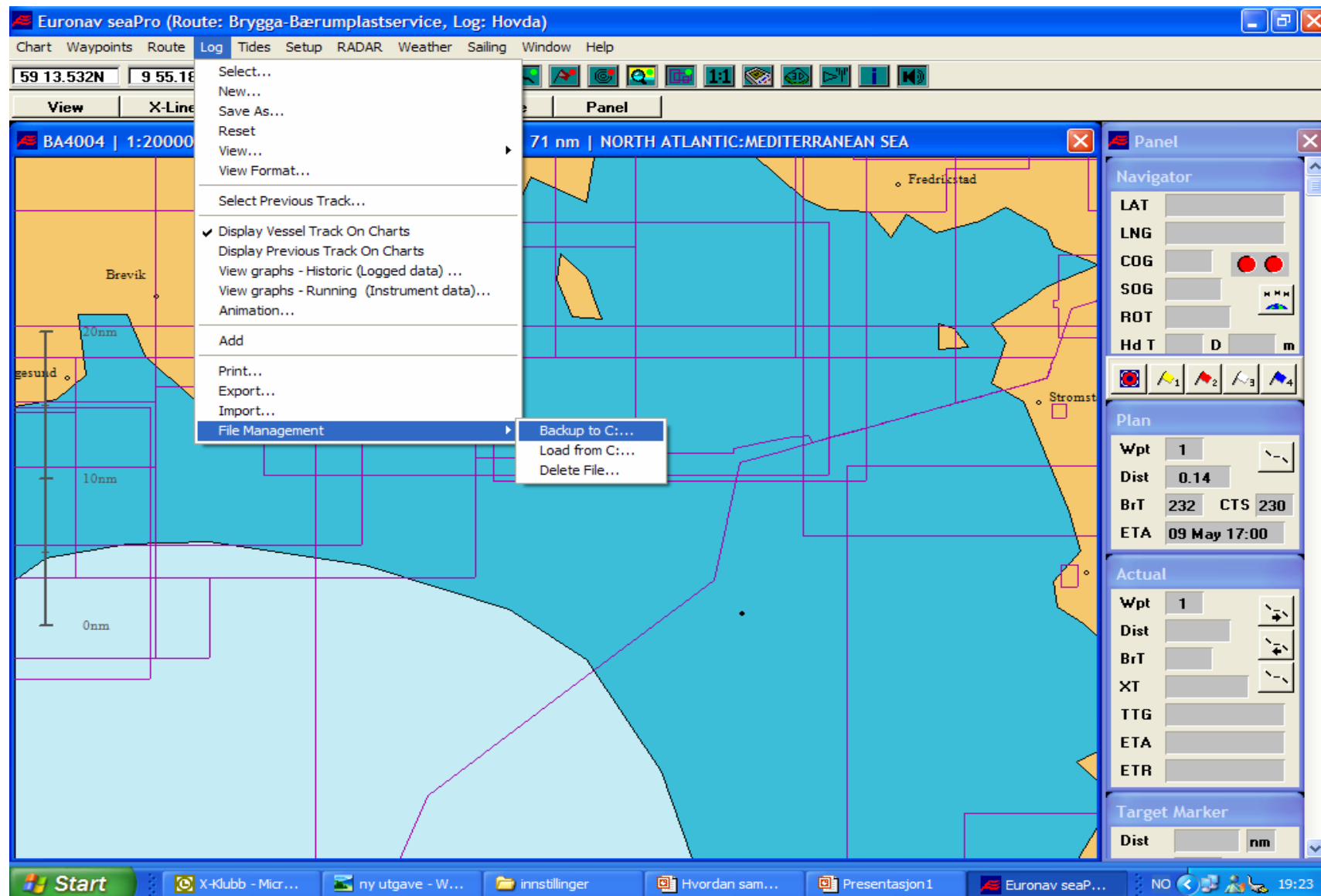
Wpt 1  
Dist  
BrT  
XT  
TTG  
ETA  
ETR

**Target Marker**

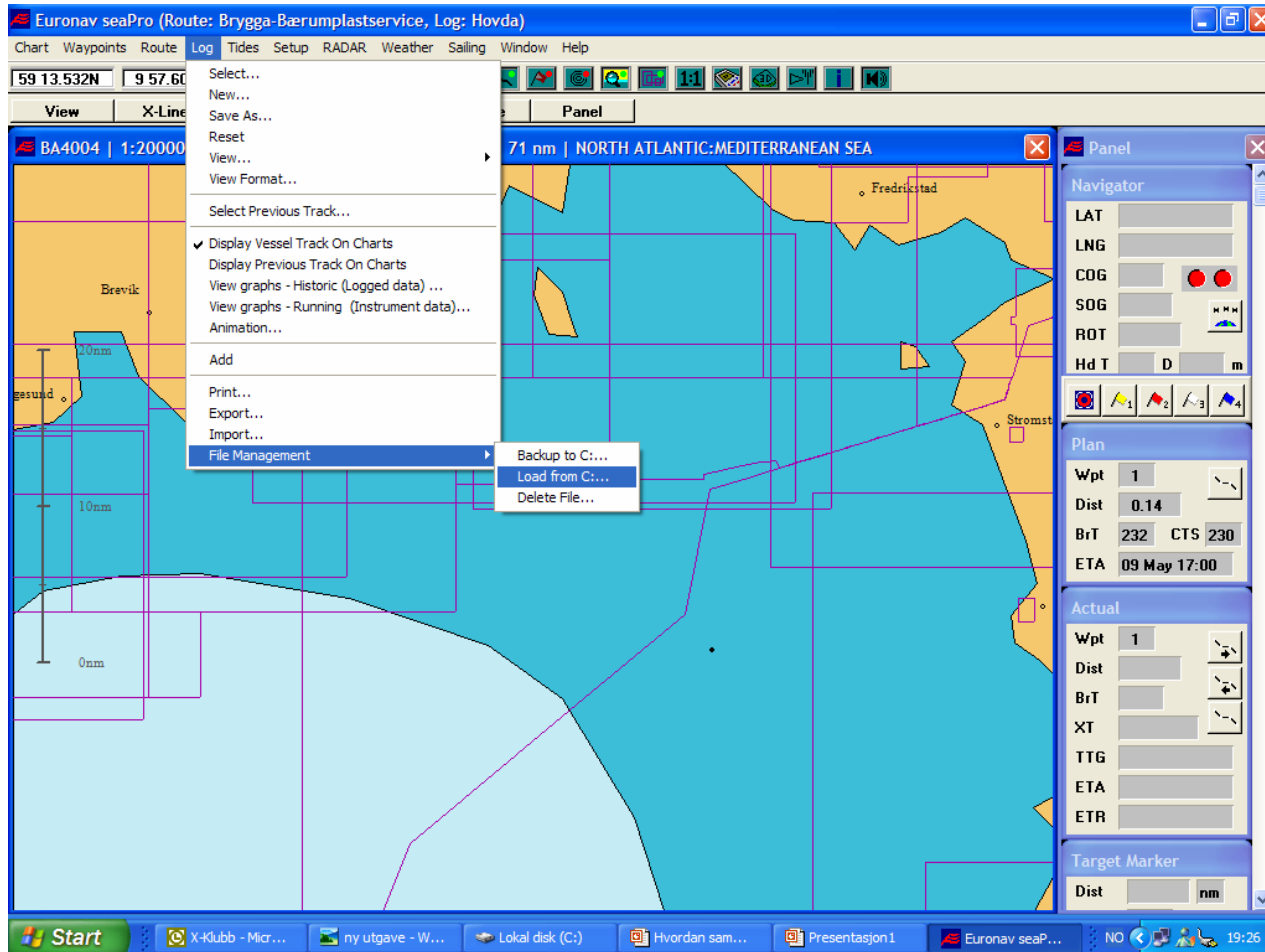
Dist nm

Start X-Kjubb - Microsoft ... ny utgave - Windo... innstillinger 2 Microsoft Power... Euronav seaPro (R... NO 19:19

Velg logg/file management/backup to C: Rute mappa åpner seg og du velger den ruten du skal eksportere, trykk ok. Du vil så finne 4 filer som ligger rett under C disken din.



Skal du importere en loggfil fra en annen båt, legg filen rett under disken C. Velg logg/file management/load from C



C disken vil da åpne seg og du vil kunne velge den loggfilen som du på forhånd har lagt der, velg og trykk ok.

Du får da spørsmål om du vil bruke denne filen

