

Gå på logg/file management, Backup

The screenshot displays the seaPro Plus software interface. At the top, the title bar reads "seaPro Plus Cells (6) N05H0820 | ~ 1:8000 | Metres | x2.5 | datum WGS84 | 10 nm | N05H0820 (Harbour) (Route: NONE, Log: Brygga-Nesodden) - [Cells (6) N05H0820]". The main menu bar includes "Chart", "Waypoints", "Route", "Log", "Tide", "Weather", "AIS/Radar", "Alarm", "Sailing", "Setup", "Window", and "Help". A secondary toolbar contains icons for various functions, including "AIS", "Pos", and "GPS".

The central area shows a nautical chart of a harbor region with various depth contours and labels. A context menu is open over the chart, listing the following options: "New", "Select", "Save As", "Reset", "Display Vessel Track On Charts", "Display Previous Track On Charts", "Add", "Inquire Log", "View Format", "View - Data Log", "View - Position Track", "View graphs - Running (Instrument data)", "View graphs - Historic (Logged data)", "Animation", "Settings...", and "File Management". The "File Management" option is highlighted, and a sub-menu is open, listing: "Backup", "Restore", "Delete", "Import", "Export", and "Print".

On the right side of the interface, there are several control panels: "Navigator" with fields for "Lat", "Lng", "COG", "SOG", "ROT", "Hd T", and "UTC"; "Log Marker" with "On track" and "Off track" radio buttons; "Actual" with fields for "WPT", "Dist", "BrT", "XTE", "TTG", "ETA", "DTR (nm)", and "ETR"; and "Target Marker" with fields for "Dist (nm)", "BrgT", and "Setup".

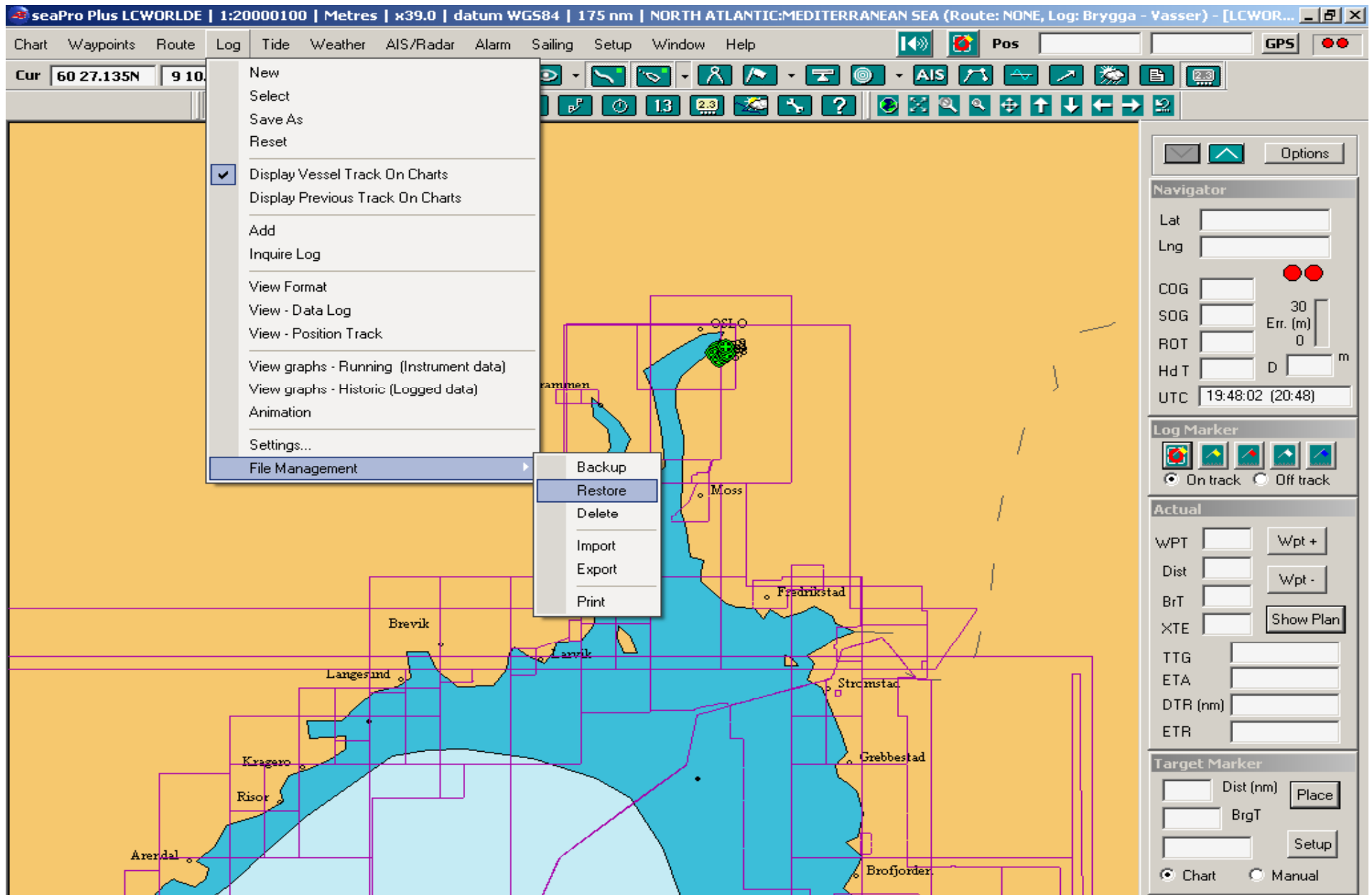
Hvis du vil velge en spesifikk rute trykk på knappen "select Individual Files"
Vil du endre hvor tekstfilen skal lagres trykk på " Change Path"
Trykk så på "Backup" knappen

The screenshot displays the seaPro Plus software interface. The main window shows a nautical chart with various waypoints and routes. A "File Management" dialog box is open in the center, with three buttons circled in red and numbered 1, 2, and 3. The dialog box contains the following elements:

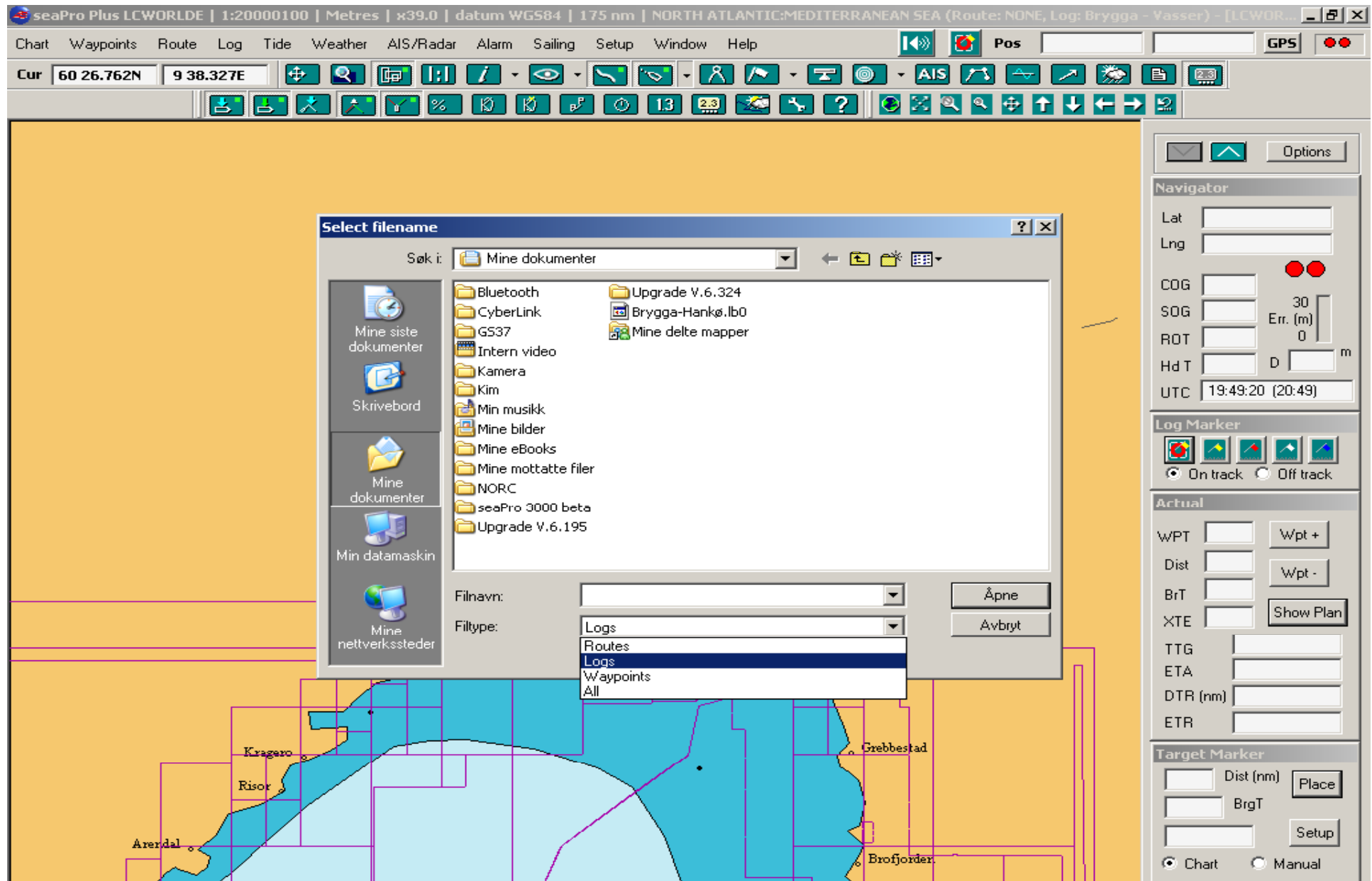
- Files to Backup:** Three checkboxes for "All Logs", "All Routes", and "All Waypoints Files". Below them is a "Select Individual Files" button (labeled 1) and a text field showing "0 items".
- Backup Destination:** A section titled "Current Path" with a text field containing "C:\Documents and Settings\Administrator\M". Below it is a "Change Path" button (labeled 2).
- Backup:** A "Backup" button (labeled 3) and a "Close" button.

The software interface includes a menu bar (Chart, Waypoints, Route, Log, Tide, Weather, AIS/Radar, Alarm, Sailing, Setup, Window, Help) and a toolbar with various navigation and display controls. The status bar at the bottom shows coordinates (Cur 59 32.134N, 10 28.462E) and other navigation data.

Skal du importere en loggfil fra en annen båt, legg filen rett under disken C. Velg logg/file management/Restore



C disken vil da åpne seg og du vil kunne velge den loggfilen som du på forhånd har lagt der, velg om det er en loggfil/routes eller All



Har du en tekst fil du skal importere, velg Import

