



### Nav Properties

Navigator | Track | Log | Display | NMEA Rx | NMEA Tx | RADAR | Asset tracking

**Track Recording**

- On
- Use memory
- Interval:  Hrs.  Mins.  Secs.
- Distance:  nm
- Track Width:  nm

**Extended Track Lines**

- Enable
- COG
- Allow < 1 Kt
- Gyro
- Parallel Indices:
  - COG
  - Gyro
  - Width:  nm
- Time for track line (in minutes):  3  6  12  30  60  Fixed
- Time for predicted path (in minutes):  Off  0.5  1  2  3  6
- Use red line

OK Avbryt Hjelp

Options

### Navigator

Lat   
Lng   
COG  30  
SOG  Err. (m) 0  
ROT   
HdT  D  m  
UTC

### Log Marker

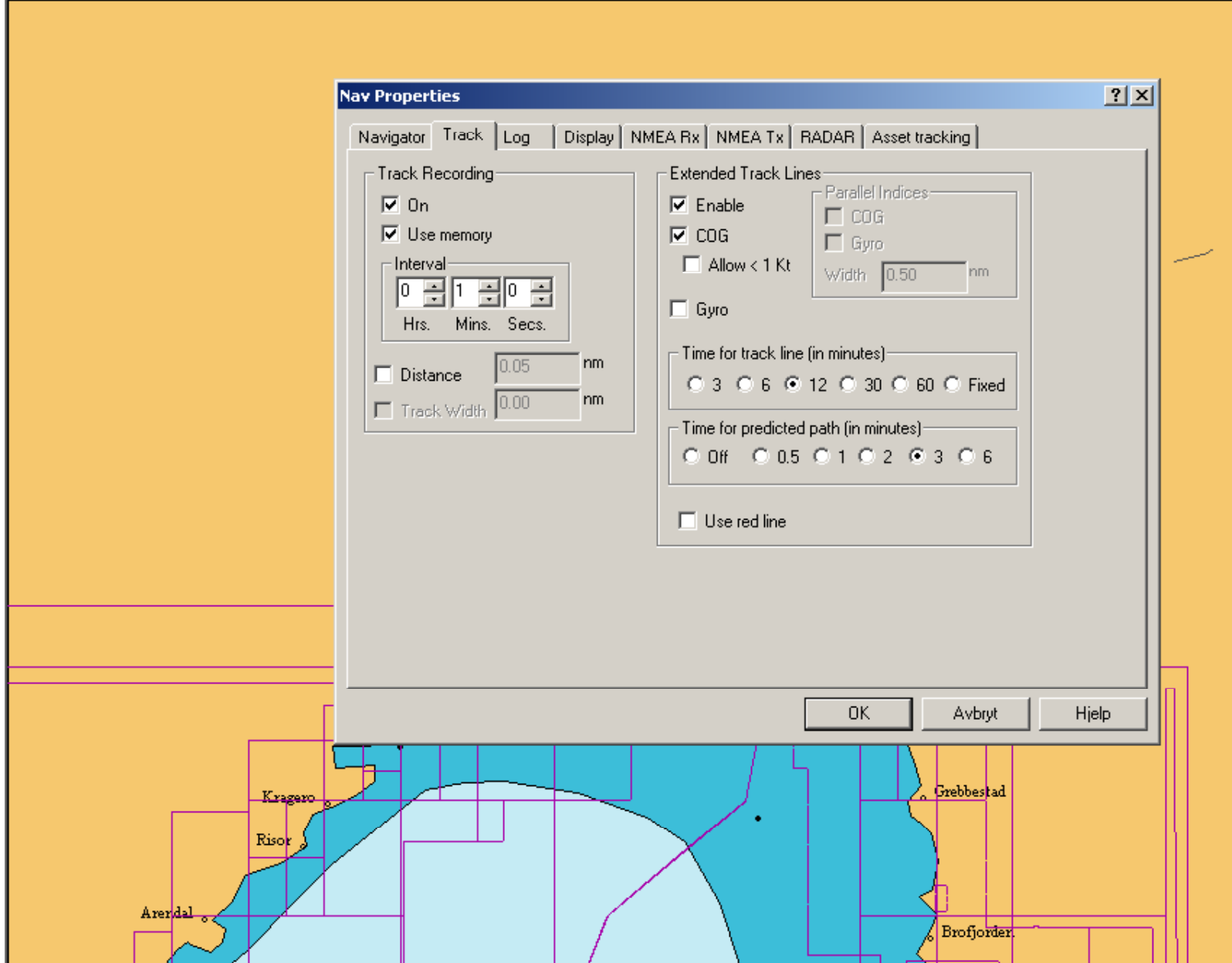
On track  Off track

### Actual

WPT  Wpt +  
Dist  Wpt -  
BrT   
XTE  Show Plan  
TTG   
ETA   
DTR (nm)   
ETR

### Target Marker

Dist (nm) Place  
 BrgT  
 Setup  
 Chart  Manual



### Nav Properties

Navigator | Track | Log | Display | NMEA Rx | NMEA Tx | RADAR | Asset tracking

**Log Recording**

- On
- Act as DDE Server
- Log File Daily Name Change:
  - Off
  - At midnight UTC time
  - At midnight local time
- Log File Type:
  - Additional ASCII text file

**Position**  0 Hrs. 1 Mins. 0 Secs.

**Pos/COG/SOG**  0 Hrs. 10 Mins. 0 Secs.

**Pos/Water Temp**  0 Hrs. 10 Mins. 0 Secs.

**Pos/Wind(T)**  0 Hrs. 10 Mins. 0 Secs.

**Pos/Log Speed/Hdg M/Hdg T**  0 Hrs. 10 Mins. 0 Secs.

**Pos/Depth**  0 Hrs. 10 Mins. 0 Secs.   
 Add To Overlay

**Pos/COG/SOG/ROT/Speed/Hdg M - T/Log/Depth/Wind**  0 Hrs. 0 Mins. 10 Secs.   
Records most commonly used data

OK Avbryt Hjelp

Options

### Navigator

Lat   
Lng

COG  30  
SOG  Err. (m) 0  
ROT   
HdT  D  m

UTC

### Log Marker

On track  Off track

### Actual

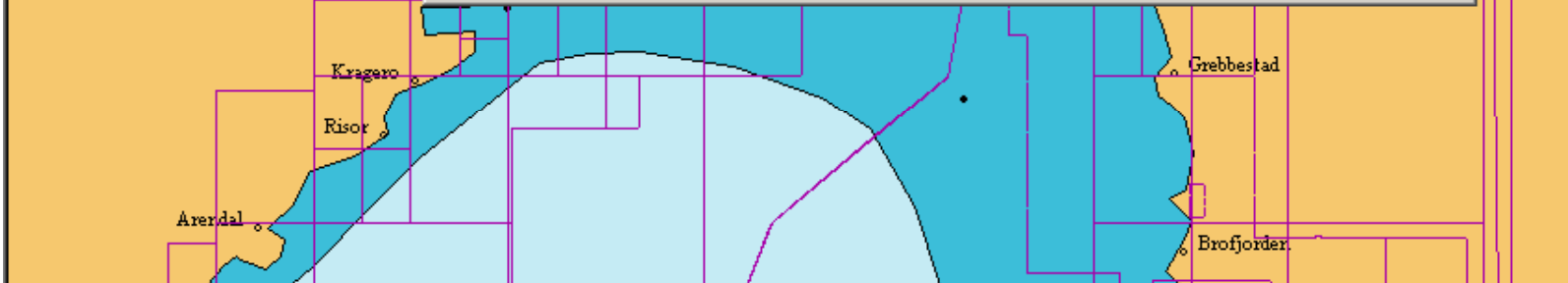
WPT  Wpt +  
Dist  Wpt -  
BrT   
XTE  Show Plan

TTG   
ETA   
DTR (nm)   
ETR

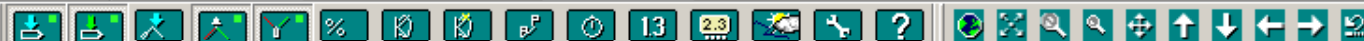
### Target Marker

Dist (nm) Place  
 BrgT  
 Setup

Chart  Manual



Cur 60 26.949N 10 27.505E



### Nav Properties

Navigator | Track | Log | Display | NMEA Rx | NMEA Tx | RADAR | Asset tracking

**Plot**

- Route
- Route text
- Track
- Previous track
- Plan
- Plan text
- Plan ETA
- Waypoints
- Waypoint text

**Vessel Rings**

- On
- Radius: 0.500 nm
- Autosize
- Number: 1

**Chart Auto-Scrolling**

Scroll when: 18 % from edge

**Look ahead**

- Enable
- On scrolling - Position vessel at: 18 % from edge

True Motion (Vessel moves) <- look ahead -> Relative Motion (Vessel fixed)

**Vessel Shape**

- On
- Show as ring at < 1knot
- Show as unscaled
- Magnify: 0.70

**True heading**

- Use gyro (NMEA HDT)
- Use COG
- Calculate from magnetic (NMEA HDM)

OK Avbryt Hjelp

Options

### Navigator

Lat:

Lng:

COG:

SOG:  Err. (m): 30

ROT:  0

Hd T:  D:  m

UTC: 19:58:02 (20:58)

### Log Marker

On track  Off track

### Actual

WPT:  Wpt +

Dist:  Wpt -

BrT:

XTE:  Show Plan

TTG:

ETA:

DTR (nm):

ETR:

### Target Marker

Dist (nm) Place

BrgT

Setup

Chart  Manual

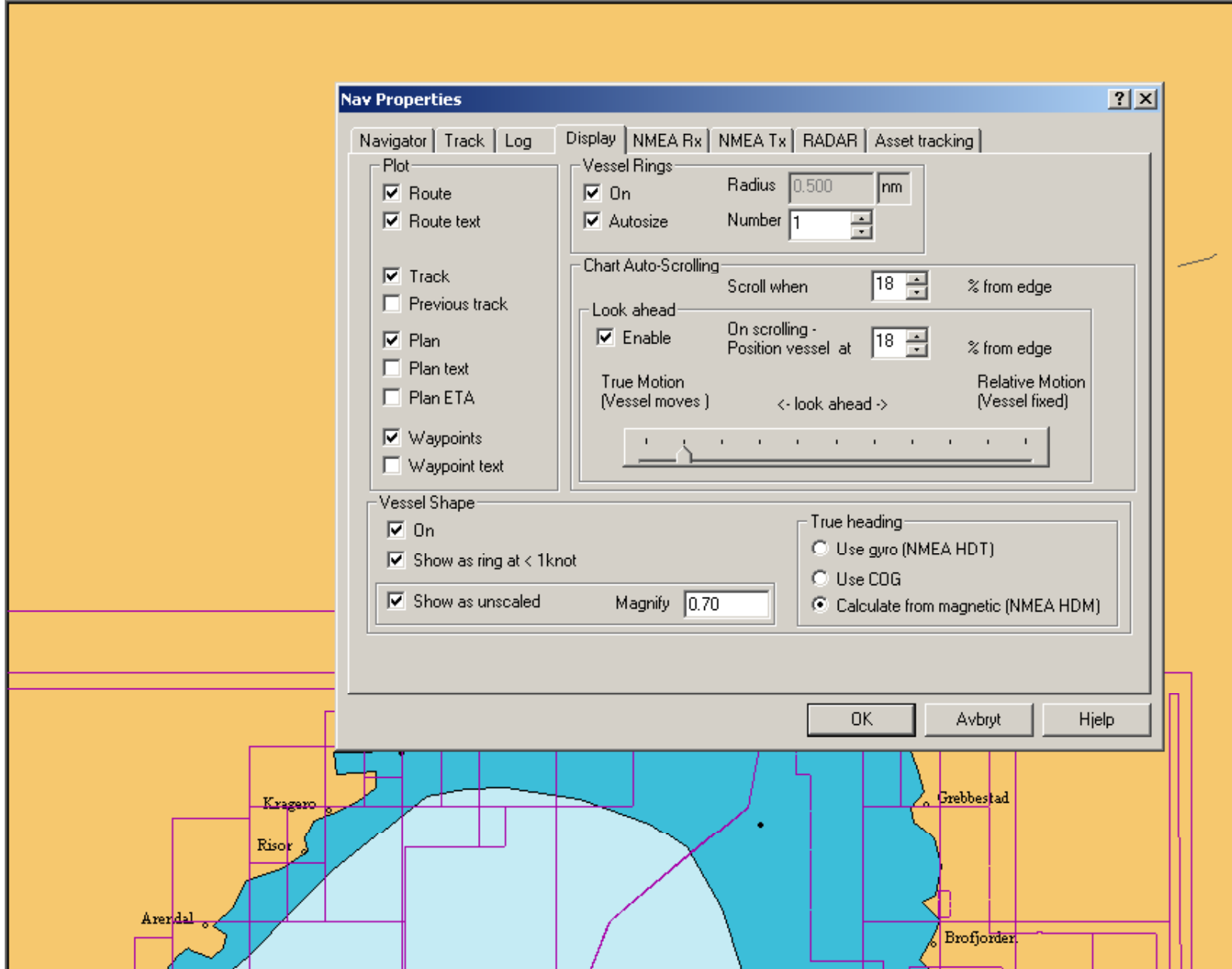


Chart Waypoints Route Log Tide Weather AIS/Radar Alarm Sailing Setup Window Help

Cur 60 26.949N 10 27.505E

GPS [Red Light]

### Nav Properties

Navigator | Track | Log | Display | NMEA Rx | NMEA Tx | RADAR | Asset tracking

Receive NMEA Sentences

Position

- RMC (Pos only)
- GGA (Pos/DGPS)
- GLL (Pos)
- GCA (Pos)
- GXP (Pos)
- Sat.Com. (Pos)
- Any of the above

Ignore if from Talker II

Other

- RMC (COG/SOG Only)
- VTG (COG/SOG)
- VHW (Heading/Speed)
- DBT/DPT (Depth m)
- DBK/DBS (Depth)
- VLW (Log nm)
- VWR/VWT/MwV (Wind Angle/Speed)
- Calculate True/Apparent (if not sent)
- VDR (Tidal Set/Drift)
- MTW (Water Temp)
- TOB (Battery Voltage)
- HDT (Heading T)
- HDM/HDG (Heading M)
- MTA (Air Temp)
- MWD (Geo wind)
- ROT (Rate of turn)
- ROT calc from HDT/COG

Max GPS speed

500 Kts

5 Delay (s)

Allows the ignoring of 'glitch' positions due to noise or faulty GPS.

Data time out (s)

10 Default 10 seconds

NKE Man Overboard Button

OK Avbryt Hjelp

Options

### Navigator

Lat [ ]

Lng [ ]

COG [ ]

SOG [ ] 30 Err. (m)

ROT [ ]

Hd T [ ] D [ ] m

UTC 19:59:05 (20:59)

### Log Marker

On track  Off track

### Actual

WPT [ ] Wpt +

Dist [ ] Wpt -

BrT [ ]

XTE [ ] Show Plan

TTG [ ]

ETA [ ]

DTR (nm) [ ]

ETR [ ]

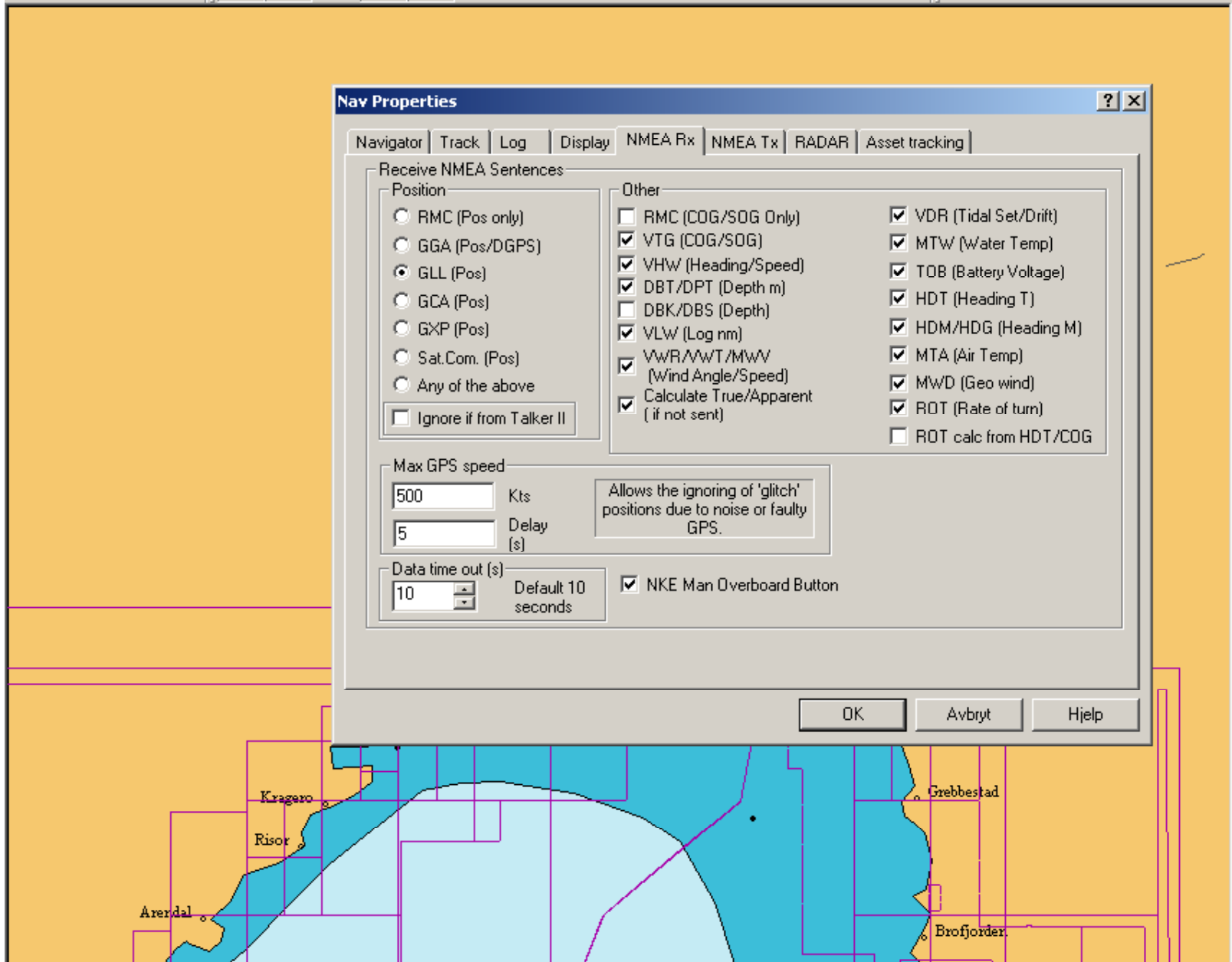
### Target Marker

[ ] Dist (nm) Place

[ ] BrgT

[ ] Setup

Chart  Manual



### Nav Properties

Navigator | Track | Log | Display | NMEA Rx | NMEA Tx | RADAR | Asset tracking

Transmit NMEA Sentences

Position/Speed

- GGA (Pos/Status)
- GLL (Pos)
- GCA (I.C.S.)
- VTG (COG/SOG)
- HDT (Heading T)
- ROT - Rate of Turn

Autopilot

- APA (Autopilot)
- APB (Autopilot)
- BWR (Bearing/Distance)
- BWC (Bearing/Distance GC)
- XTE (Cross Track Error)
- PRAPA (Special APA)

1 ... Tx Interval (s) ... 10

Other

- RMB / RMC
- WPL (Route waypoint)
- HSC (Heading)

Special Sentences

- SILVA
- B&G
- NKE
- tacktick
- Send via Marker Tx Port

Precision for position sentences

Number of dp's

Other

- VDR (Tidal Set/Drift)
- MWD - Geographic wind

Echo Rx To Tx

- Specials (\$Pxxx)

OK Avbryt Hjelp

Options

### Navigator

Lat

Lng

COG

SOG  Err. (m)

ROT

Hd T  D  m

UTC

### Log Marker

On track  Off track

### Actual

WPT  Wpt +

Dist  Wpt -

BrT

XTE  Show Plan

TTG

ETA

DTR (nm)

ETR

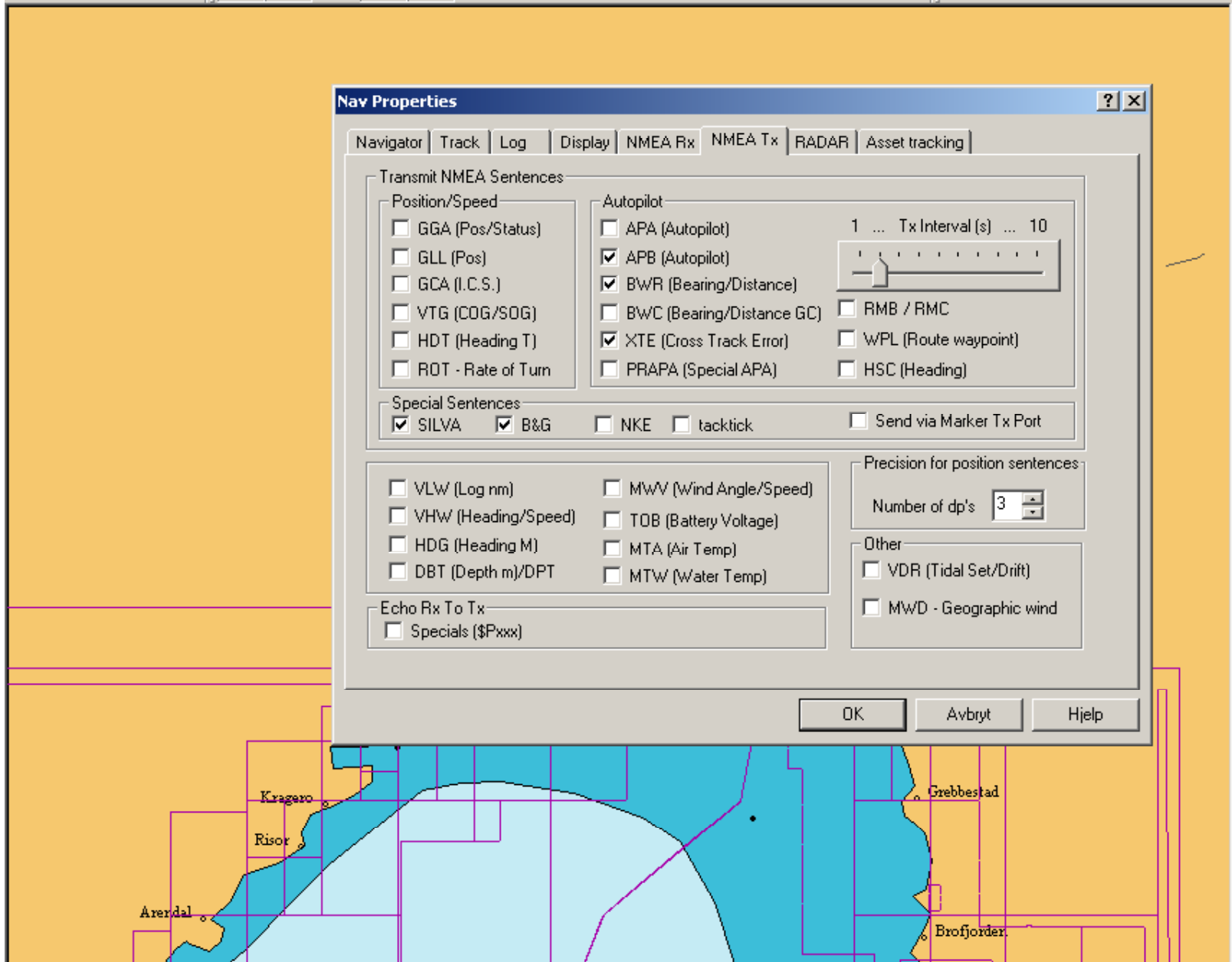
### Target Marker

Dist (nm) Place

BrgT

Setup

Chart  Manual



### Nav Properties

Navigator | Track | Log | Display | NMEA Rx | NMEA Tx | **RADAR** | Asset tracking

Enable PC RADAR

Tracking

Receive NMEA Sentences

OSD (Own Ship's Data)

TTM (Tracked Targets)

Alarms

Own vessel range ring

Target Timeout

30 Seconds

Target Display

Target color: Red

Track color: Light White

Show track

OK Avbryt Hjelp

Options

### Navigator

Lat

Lng

COG

SOG  30 Err. (m)

ROT  0

Hd T  D  m

UTC 21:06:38 (22:06)

### Log Marker

On track  Off track

### Actual

WPT  Wpt +

Dist  Wpt -

BrT

XTE  Show Plan

TTG

ETA

DTR (nm)

ETR

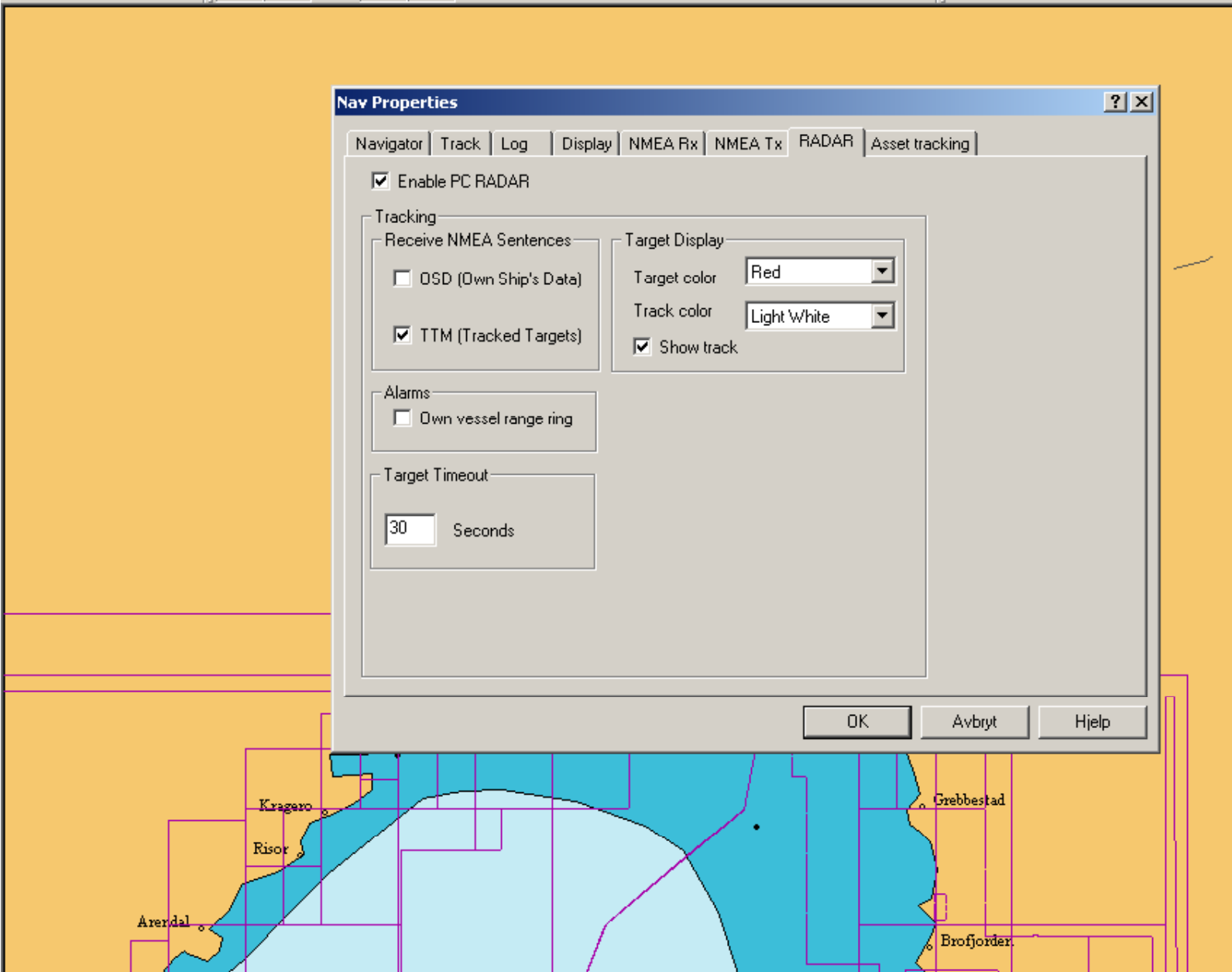
### Target Marker

Dist (nm) Place

BrgT

Setup

Chart  Manual



### Nav Properties

Navigator | Track | Log | Display | NMEA Rx | NMEA Tx | RADAR | Asset tracking

Show on screen  
 Transmit data  
 Enable tracking

Monitor asset types

MOB/Life jackets  Show track  Alarm  
 Aux vessels - water bikes/tenders  
 Vessels

Clear Display

OK Avbryt Hjelp

Options

### Navigator

Lat   
Lng   
COG  30  
SOG  Err. (m)   
ROT  0  
Hd T  D  m  
UTC 21:07:52 (22:07)

### Log Marker

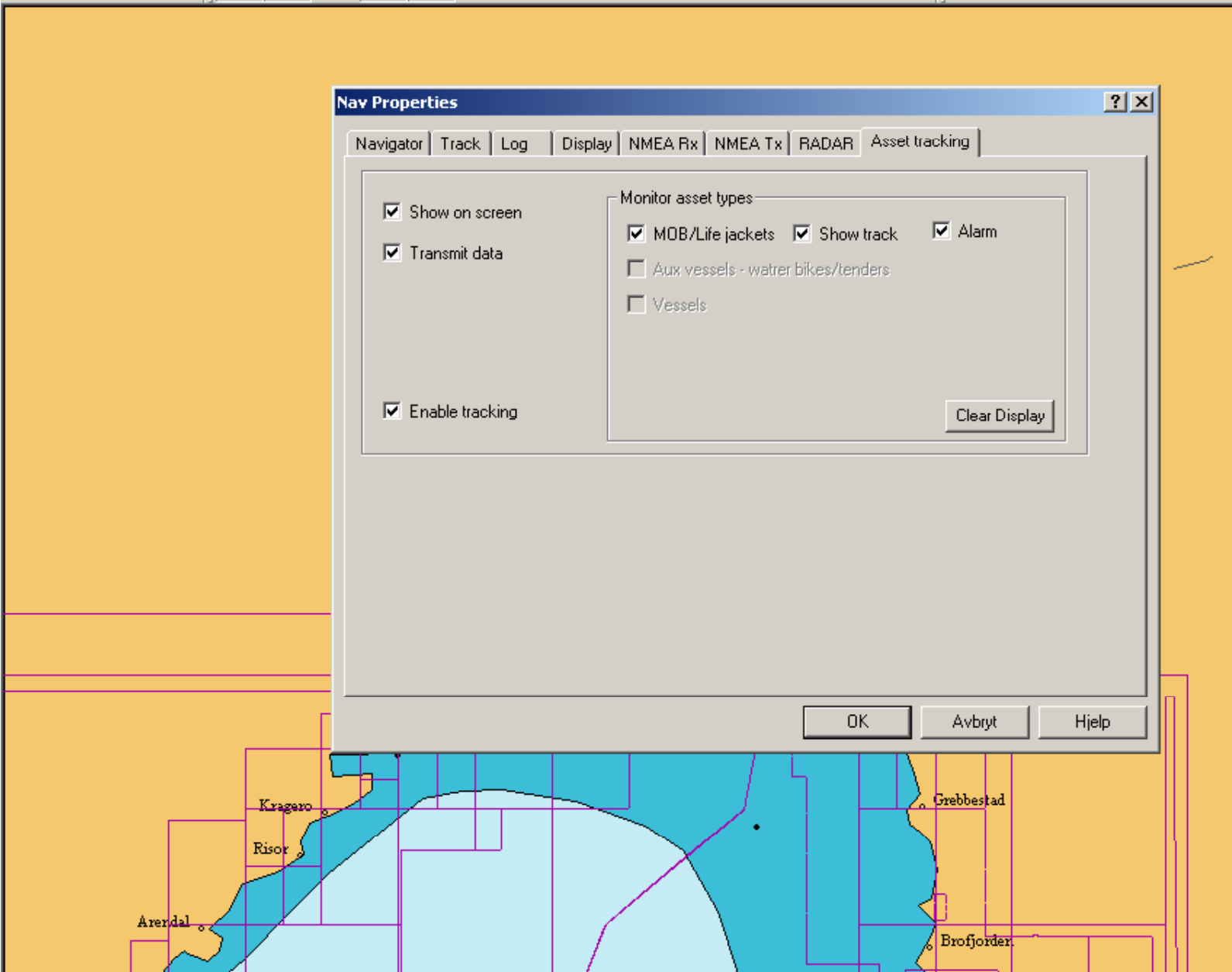
On track  Off track

### Actual

WPT  Wpt +  
Dist  Wpt -  
BrT   
XTE  Show Plan  
TTG   
ETA   
DTR (nm)   
ETR

### Target Marker

Dist (nm) Place  
 BrgT  
 Setup  
 Chart  Manual





Cur **60 27.694N** **10 28.926E**

### Chart Settings

Cartography 1 | Cartography 2 | Chart Datums | Chart Modes | Chart Directories | S57 A | S57 B | Overlays | Databases

**Contours**

- 0-50m
- > 50m
- Topography
- Fishing
- Traffic
- Height

**Other**

- Buoy/Marks
- Auto text detail
- Light sectors
- Spot depths
- Changes
- Images
- Disable non-critical HCRF warnings

- Pipe/Cable
- Magnetic variation
- Transits
- Rocky F.S
- Grid chart
- Grid auto
- Chart scale (nm)
- Info

**Shallow Depths (m)**

- Enable

**Chart Display**

- Chart folio boxes
- Auto-buoy zoom
- Auto detail Level
- Overzoom
- Chart ID
- Symbolized
- Wipes/fades

**Light sequences**

- Always
- Cursor
- Vessel  Eye height (m)

OK Avbryt Bruk Hjelp

Options

### Navigator

Lat   
Long   
COG  30  
SOG  Err. (m)   
ROT   
Hd T  D  m  
UTC

### Log Marker

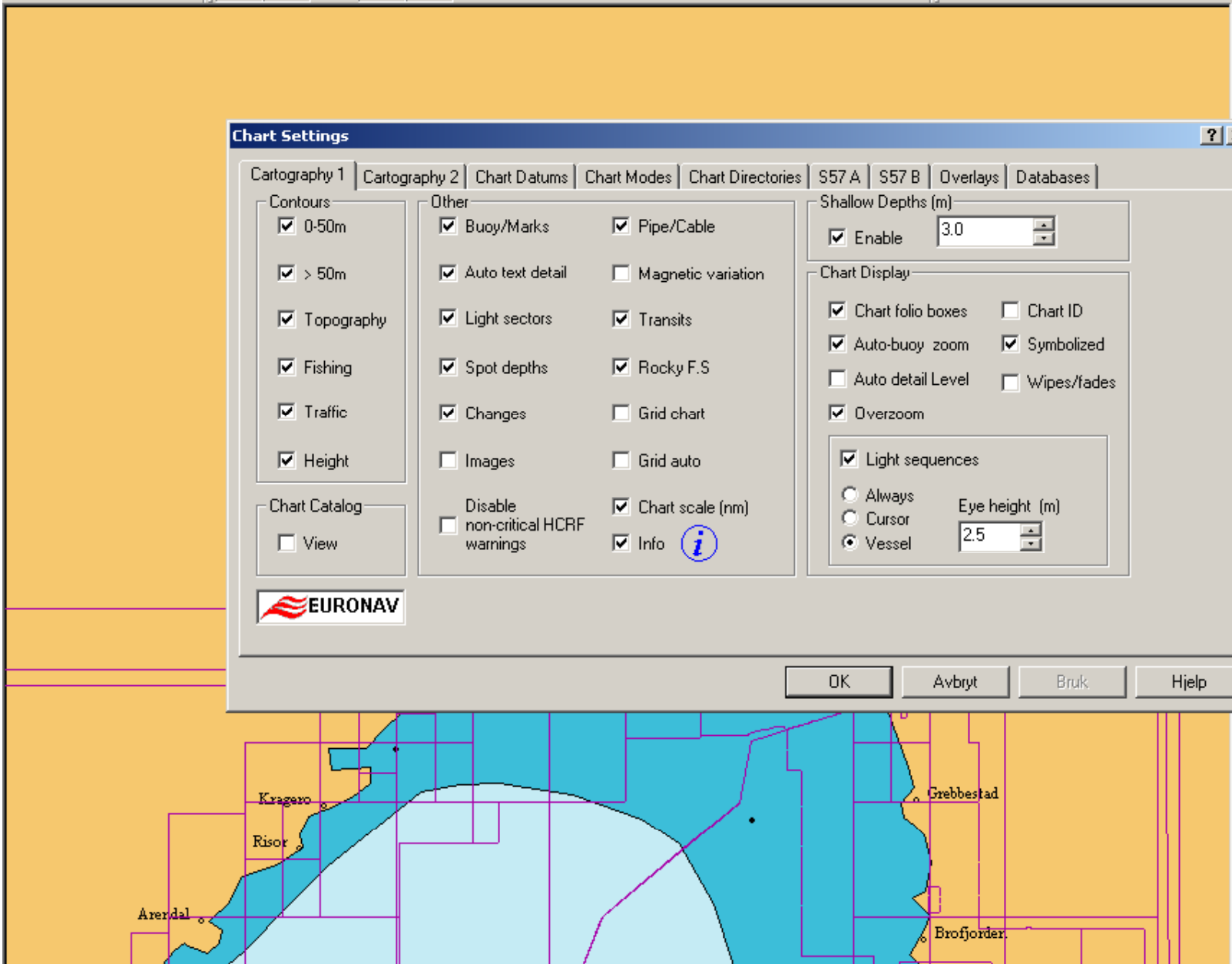
On track  Off track

### Actual

VPT  Wpt +  
Dist  Wpt -  
BrT   
XTE  Show Plan  
TTG   
ETA   
DTR (nm)   
ETR

### Target Marker

Dist (nm) Place  
 BrgT  
 Setup  
 Chart  Manual



### Chart Settings

Cartography 1 | Cartography 2 | Chart Datums | Chart Modes | Chart Directories | S57 A | S57 B | Overlays | Databases

**Chart Type Preference**

Vector

Raster

Ignore ARCS overview 4000

**Outline Charts**

None  Always

Auto (recommended)

**Drawing styles (chart dependent)**

No depth contour shading

Draw using object styles

Draw text using high-light

Antialiased quality text

**Enhance raster chart image**

Enable - default

Larger numeric font size

**Position display format**

Normal \* 50 30.000N

Number of dp's 3

**Measure Bar - display units**

nm  Meters

**Cursor Shape**

Standard  Large

Animated

**Check program has closed**

Enable Delay (s) 10

Allow up/down movement in Chart Zoom box

**Maptech BSB4/PCX Chart memory cache**

No cache  Cache  Max cache - default

Re-enable Warnings

OK Avbryt Bruk Hjelp

Options

### Navigator

Lat

Long

COG

SOG  30

ROT  Err. (m)

Hd T  0

D  m

JTC 21:08:39 (22:08)

### Log Marker

On track  Off track

### Actual

VPT  Wpt +

Dist  Wpt -

BrT

XTE  Show Plan

TTG

ETA

DTR (nm)

ETR

### Target Marker

Dist (nm) Place

BrgT

Setup

Chart  Manual

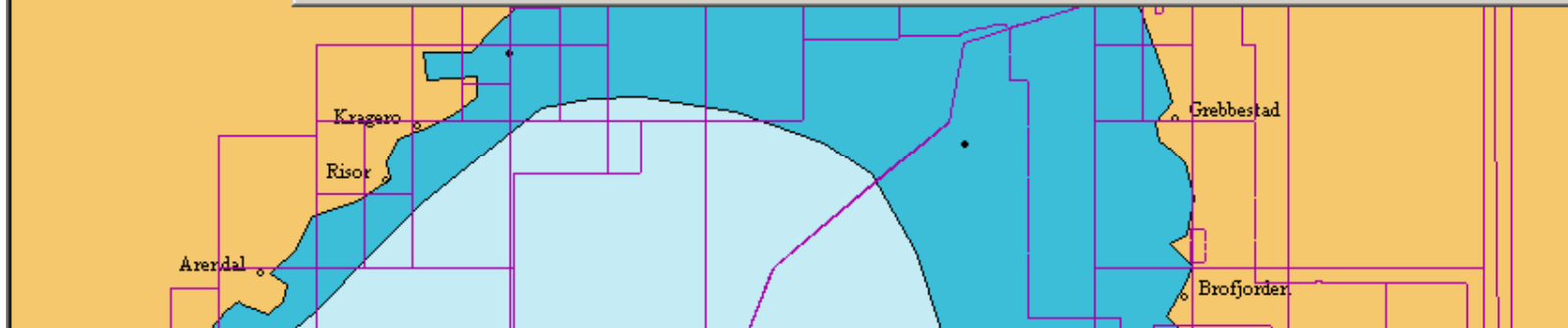








Chart Waypoints Route Log Tide Weather AIS/Radar Alarm Sailing Setup Window Help

Cur 60 27.694N 10 28.926E

GPS ●●

### Chart Settings

Cartography 1 | Cartography 2 | Chart Datums | Chart Modes | Chart Directories | S57 A | S57 B | Overlays | Databases

**Depth Area / Contours**

10.0 Safety Contour (m)

5.0 Shallow Contour (m)

50.0 Deep Contour (m)

10.0 Safety Depth (m)

Two Shades  Shallow Pattern

Auto scale detail

Show Overscale at zoom x: 100.0

ENC - features only

S52  Best object (slower draw)

S52 Cursor

**Symbology**

Enable	Viewing Group
<input checked="" type="checkbox"/>	Information
<input checked="" type="checkbox"/>	Natural & Man Made
<input checked="" type="checkbox"/>	Depths & Currents
<input checked="" type="checkbox"/>	Soundings
<input checked="" type="checkbox"/>	Obstructions & pipelines
<input checked="" type="checkbox"/>	Traffic Routes
<input checked="" type="checkbox"/>	Special Areas
<input checked="" type="checkbox"/>	Navigational Aids
<input checked="" type="checkbox"/>	Lights
<input checked="" type="checkbox"/>	Radar
<input checked="" type="checkbox"/>	Services & Small Craft

**Symbols**

Simple

Traditional

Traditional + Color

**Flag / Show**

Symbolized Boundaries

Quality of data

Missing Attribute Data

Poor Position Data

OK Avbryt Bruk Hjelp

Options

**Navigator**

Lat

Long

COG  ●●

SOG  30 Err. (m)

ROT  0

Hd T  D  m

JTC 21:11:28 (22:11)

**Log Marker**

On track  Off track

**Actual**

VPT  Wpt +

Dist  Wpt -

BrT

XTE  Show Plan

TTG

ETA

DTR (nm)

ETR

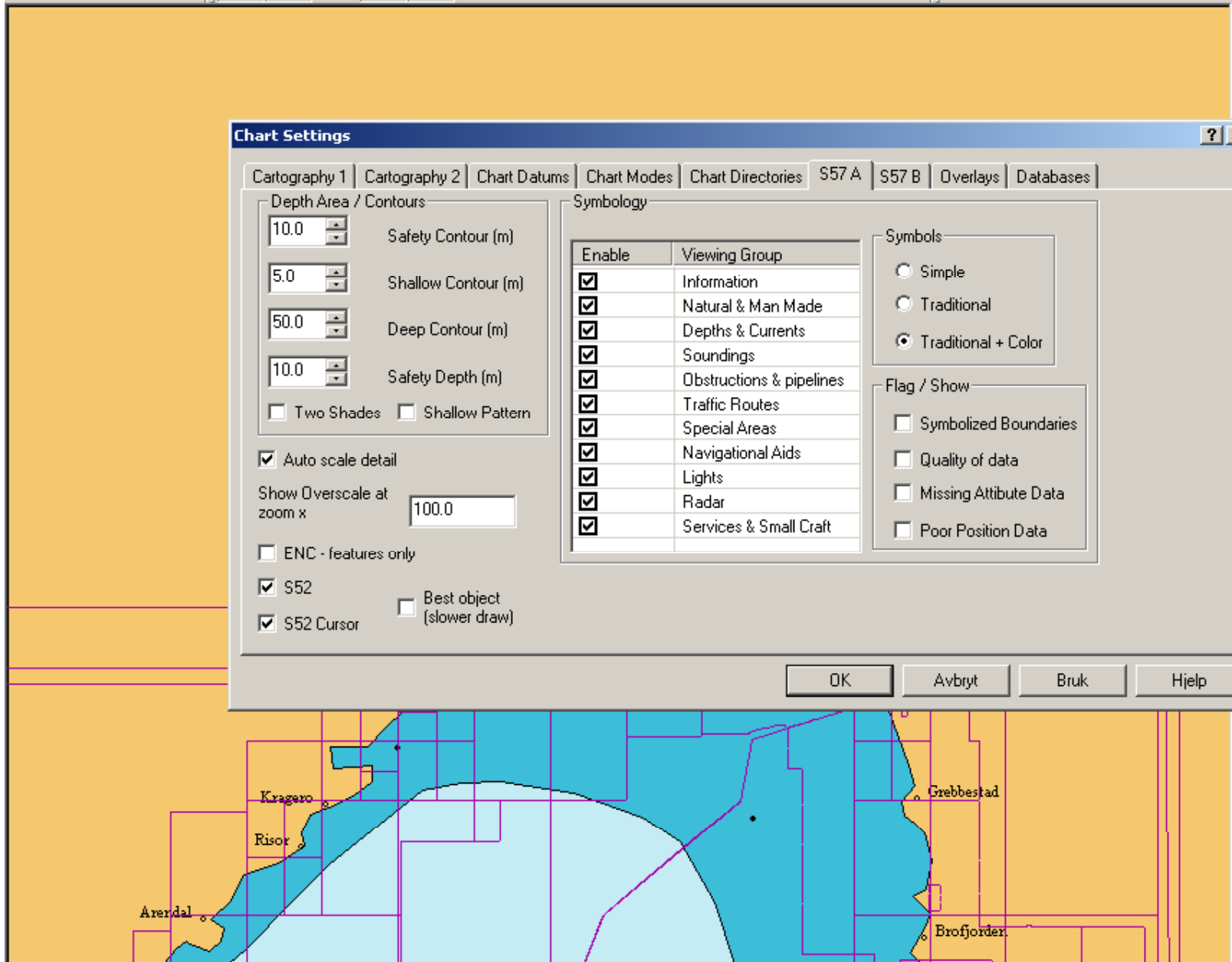
**Target Marker**

Dist (nm) Place

BrgT

Setup

Chart  Manual



### Chart Settings

Cartography 1 | Cartography 2 | Chart Datums | Chart Modes | Chart Directories | S57 A | S57 B | Overlays | Databases

Monitor Size (mm)  
Width:   
Height:

Display Categories  
 Display  
 Standard  
 Other (recommended)

Display Priorities  
 Priority 0  
 Priority 1  
 Priority 2  
 Priority 3  
 Priority 4  
 Priority 5  
 Priority 6  
 Priority 7  
 Priority 8  
 Priority 9

Text size (soundings)  
Less  Normal

Text  
 Important  
 Other

Colours  
 Defaults

Light Sectors  
 Full sectors

OK Avbryt Bruk Hjelp

Options

#### Navigator

Lat   
Long   
   
COG   
SOG  30  
ROT  Err. (m)  
Hd T  D  m  
UTC

#### Log Marker

On track  Off track

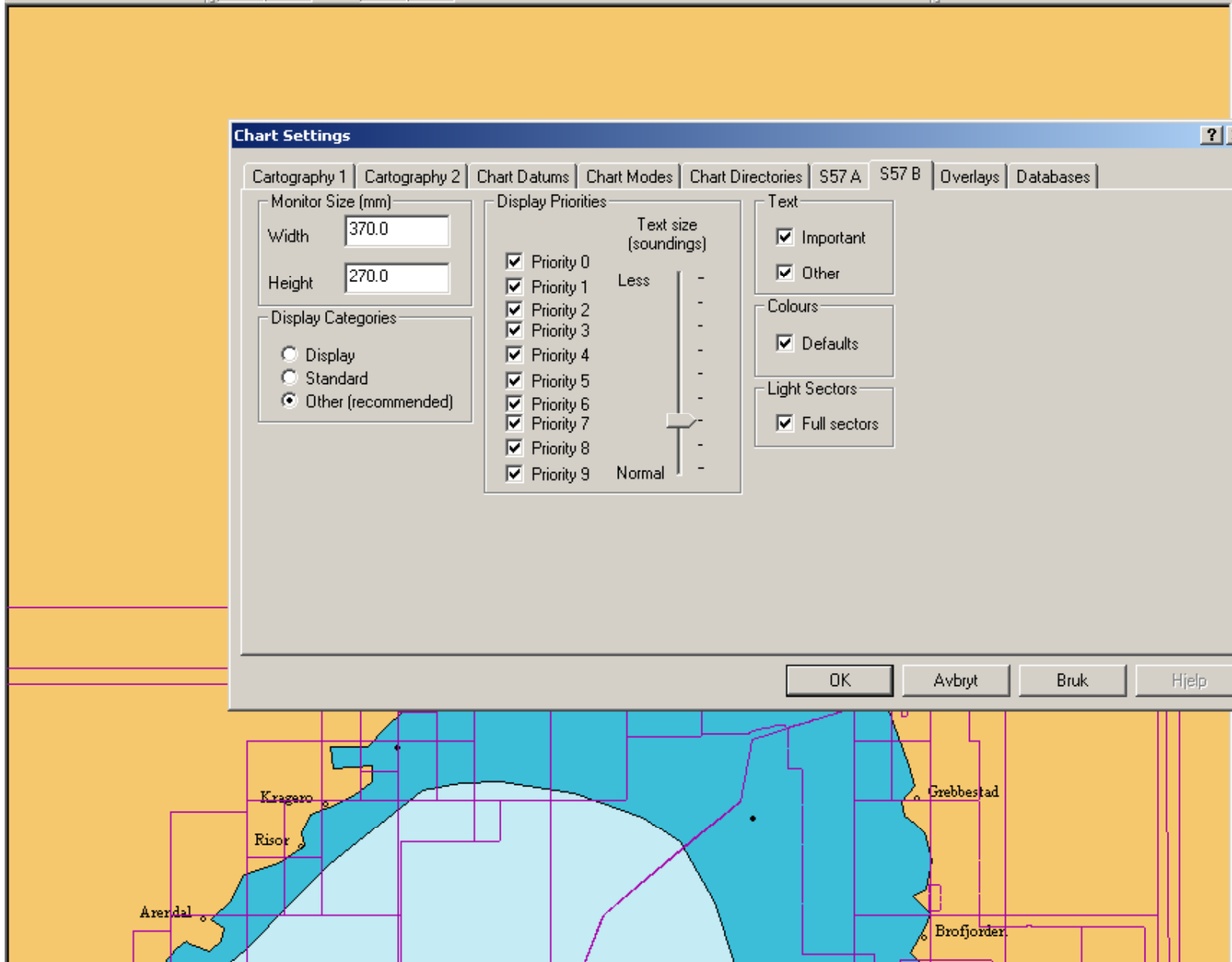
#### Actual

VPT  Wpt +  
Dist  Wpt -  
BrT   
XTE  Show Plan

TTG   
ETA   
DTR (nm)   
ETR

#### Target Marker

Dist (nm) Place  
 BrgT  
 Setup  
 Chart  Manual



Cur 60 27.694N 10 28.926E



### Chart Settings

Cartography 1 | Cartography 2 | Chart Datums | Chart Modes | Chart Directories | S57 A | S57 B | **Overlays** | Databases

Overlays to load at start up

Overlay 1 - (editable)  
Show  Overlays\Overlay.gxf Browse...

Overlay 2  
Show  Browse...

Note: Changes only take place on restarting the application.

OK Avbryt Bruk Hjelp

Options

#### Navigator

Lat   
Long   
COG   
SOG  30  
ROT  Err. (m)  
Hd T  D  m  
UTC 21:12:30 (22:12)

#### Log Marker

On track  Off track

#### Actual

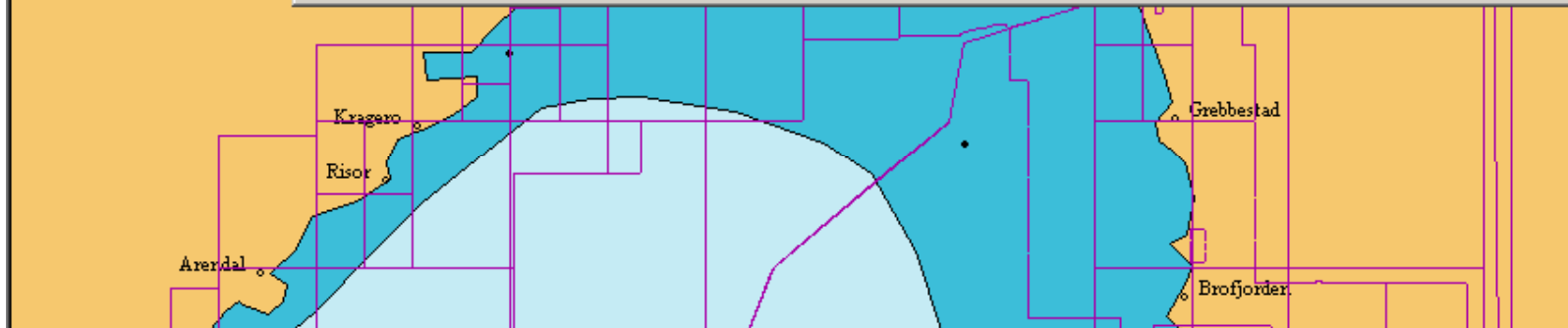
WPT  Wpt +  
Dist  Wpt -  
BrT   
XTE  Show Plan

TTG   
ETA   
DTR (nm)   
ETR

#### Target Marker

Dist (nm) Place  
 BrgT  
 Setup

Chart  Manual







Cur 60 26.949N 10 21.820E

**Serial Settings**

Channels A  B  C  D  E  F  G  H

Com Port: 1 3 4 11 15 16 17 18 AUTO-SCAN

Label

Note: This does not effect your configurations - Used for identifying COM ports only

NMEA Rx

NMEA Tx          None

Marker Tx          None

AIS          None

NAVTEX          None

Note: Navtex can not share a port with any other input.

Baud Rate

Power Cable

Secondary Position Fix          None

COM	Description	Status	USB

Note: Some ports may be virtual ports (bluetooth/PDA) and not be available for NMEA 0183 input

Controls  Use Checksums  Disable all ports

Show/Refresh OK Cancel

Options

**Navigator**

Lat

Lng

COG  ●●

SOG  30  Err. (m)  0

ROT

Hd T  D  m

UTC

**Log Marker**

On track  Off track

**Actual**

WPT  Wpt +

Dist  Wpt -

BrT

XTE  Show Plan

TTG

ETA

DTR (nm)

ETR

**Target Marker**

Dist (nm) Place

BrgT Setup

Chart  Manual

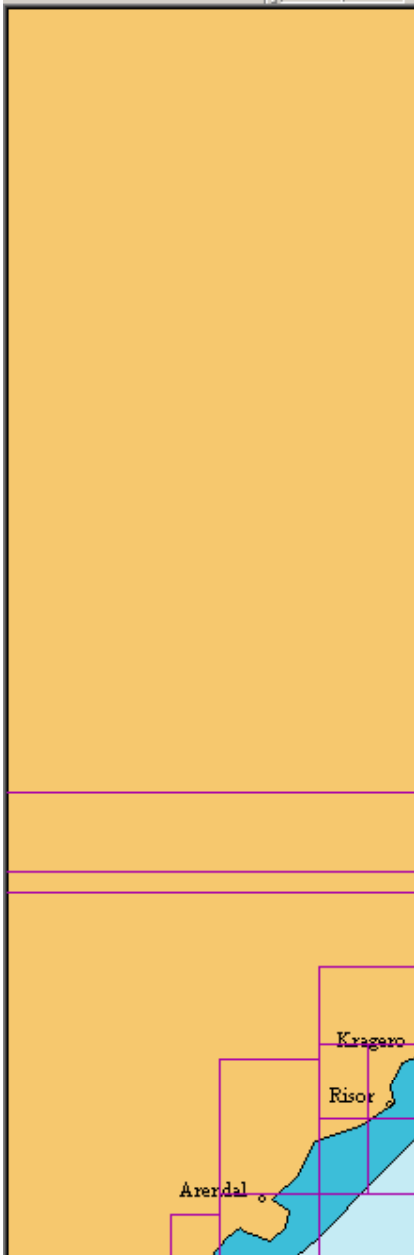




Chart Waypoints Route Log Tide Weather AIS/Radar Alarm Sailing Setup Window Help

Cur 60 27.508N 10 53.942E

GPS [Red Light]

### Vessel Information

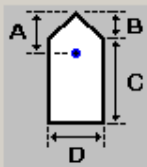
Vessel | Vessel Engine Data

Vessel profile  
 3D\Vessel\trawlerYacht13m.ves [Browse...]

Name Xtreme Speed 7.0 (knots) [Save]  
 Draught 2.0 (m) Weight 7000.0 (kg)

Depth transducer  
 Transducer to keel A 0.0 (m)  
 Transducer to water line B 0.0 (m) [Extension arms]

Vessel Shape



A Antenna distance from bow: 11.3 (m)  
 B Bow length: 8.0 (m)  
 C Remainder of length: 3.3 (m)  
 D Beam: 4.0 (m)

Advanced - User defined 2D shape for chart display  
 Standard shape [Browse...]  
 User-defined

Vessel - 3D model  
 3d\Models\Sockeye\Sockeye.mod [Browse]  
 Depth line  Transparent  
 Note : Model is scaled only to length, so as to maintain aspect ratio

[OK] [Avbryt] [Bruk]

Options

### Navigator

Lat [ ]  
 Lng [ ]

COG [ ] [Red Light] [Red Light]  
 SOG [ ] 30 Err. (m) [ ]  
 ROT [ ] 0  
 Hd T [ ] D [ ] m

UTC 21:15:11 (22:15)

### Log Marker

[Icons]  
 On track  Off track

### Actual

WPT [ ] [Wpt +]  
 Dist [ ] [Wpt -]  
 BrT [ ]  
 XTE [ ] [Show Plan]  
 TTG [ ]  
 ETA [ ]  
 DTR (nm) [ ]  
 ETR [ ]

### Target Marker

[ ] Dist (nm) [Place]  
 [ ] BrgT [ ]  
 [ ] [Setup]  
 Chart  Manual

